



# AUTOMATIC SWING DOORS

Customisable and can be assembled to meet the architectural and technical requirements of the customer. Designed to operate optimally in any condition and in any environment, meeting the most stringent safety requirements.

## A950 AUTOMATIC SWING DOOR



The A950 automated system controls door opening and closing with silent and smooth operation. It allows the user to easily open the door via a button, sensor or a remote control. Thanks to the PUSH & GO function, a touch completely opens the door.

The 950N automated system is also able to automate double-leaf entrances by interfacing the two units in a master/slave configuration and the double leaf will be moved by a single automated system.



## MAIN FEATURES

### Versatile and elegant

The FAAC 950N automated system (with spring closing system) can be installed both on the lintel and directly onto the structure of the door. It guarantees perfect compatibility and interchangeability with previous 950BM/BSM models. The housing covering the automated system can be supplied in anodised aluminium or in molded ABS in an innovative design, making it possible to fit a passive infrared detection sensor inside it. The 950N automated system is also able to automate double-leaf entrances by interfacing the two units in a master/slave configuration and the double leaf will be moved by a single automated system.

### Safe and intelligent

The automated system features two control boards, namely the 950MPS control board and the 950 I/O (input / output).

A microprocessor controls all the activities of the door in real-time and an encoder detects its angular position. Moreover, the operating logic (automatic, manual, night, open) can be selected by means of an integrated selector.

Built in conformity with the new European safety standards, speed and force are programmed according to the size of the door. If an obstacle is detected, the door re-opens immediately and, as it closes, it verifies, at slow speed, the removal of the obstacle.

### Powerful and reliable

Thanks to the accurate selection of the mechanical and electronic

components, depending on the leaf length and arm used, our 950N automated system is able to move leaves weighing over 300 kg on continuous duty, while always maintaining absolute operational safety.

- Compliant with EN16005 European Standard
- Can be installed on almost all types of internal and external doors and can be mounted either side for both push or pull doors
- The operator is designed for use on left- or right-hand doors
- The door operator boasts quiet operation during opening and closing and a silent Hold Open feature
- The MPS processor board provides real-time control of the operator's activities and the encoder detects the position of the door at all times
- Self-learning of open and closed positions and measurement of the door weight
- Anti-crushing safety device active during opening and closing

**TECHNICAL SPECIFICATIONS**

Technical Data	950N
Power supply	220-240V AC~ - 50/60 Hz
Absorbed power	100W
Use frequency	Continuous
Drive unit	24V DC motor with encoder
Activation	Electro-mechanical with/without return spring
Anti-crushing device	Standard supply
Dimensions	530mm x 100mm x 104mm (LxHxD)
Weight	10kg
Protection class	IP23
Opening angle	70° to 95°
Opening speed	Adjustable from 30% to 100%
Closing speed	Adjustable from 30% to 100%
Pause time	Adjustable from 1 to 30sec.
Standard operating functions	Automatic-manual-open
Activation arms in stainless steel	Articulated to push With short sliding block With standard sliding block
Housing cover	Aluminium or Plastic

**ACTIVATION ARMS**



**Articulated push arm (max. post depth 250 mm)**



**Short sliding block arm (length of leaf max. 800 mm)**



**Standard sliding block arm (leaf length more than 800 mm)**



**Operator shaft extension H=50 mm**



**Operator shaft extension H=80 mm**

**FUNCTION KEYPADS**

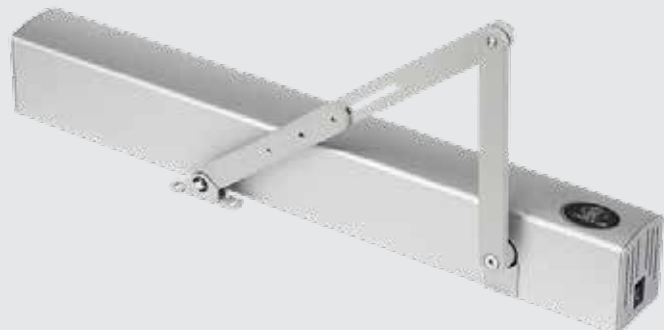


**Programming display (optional)**



**KP Controller function keypad (optional)**

## FAAC A951 AUTOMATIC SWING DOOR



The A951 automated system smoothly and silently controls door opening and closing. It allows users to easily open doors via a button, sensor or a remote control. Thanks to the PUSH&GO function, just a touch completely opens the door.

The FAAC A951 automated system can be installed both on the lintel and directly on to the structure of the door, providing flexibility and easy installation (thanks to the fixing plate and low weight). The housing cover is made from anodised aluminium that complements its aesthetics. The A951 automated system is also able to automate double-leaf entrances by interfacing the two units in a master/ slave configuration. The double leaf will be driven by a single automated system for the highest degree of synchronisation of the leaves guaranteed through CAN-BUS communication.



### MAIN FEATURES

#### Safe and intelligent

The A951 features a microprocessor controlling all the door activities in real-time, with an encoder detecting its angular position in every moment. Additionally, the operating logic (automatic, manual, night, open) can be selected by means of a lateral selector. Manufactured in compliance with the new European safety standards EN16005, the A951 automated system can operate in low energy or manage EN16005 radar monitoring such as the new laser sensor XPB SCAN.

#### Silent and low-energy consumption

Thanks to the accurate selection of mechanical and electronic components, the A951 automated system can silently drive leaves weighing up to 100 kg on continuous duty, ensuring absolute operating safety at all times and offering significant energy savings both during standby and during operation.

- Self-learning of open and closed positions and measurement of the door weight
- Anti-crushing safety device active during opening and closing
- Compliant with EN16005 European Standard
- Can be installed on almost all types of internal and external doors and can be mounted either side for both push or pull doors
- The operator is designed for use on left- or right-hand doors
- The door operator boasts quiet operation during opening and closing and a silent Hold Open feature
- The MPS processor board provides real-time control of the operator's activities and the encoder detects the position of the door at all times

**TECHNICAL SPECIFICATIONS**

Technical Data	A951
Power supply voltage	220-240V AC~ - 50/60 Hz
Max. Power	100W
Use Frequency	100W
Motor	Motor-powered at 24V
Max. accessories load	1A - 24V
Electric lock power supply voltage	(N.O./N.C.) 24V / 500mA max
Dimensions (LxHxD)	575mm x 60mm x 70mm
Weight	7Kg
Operation in case of power cut	Manual push/pull opening
Max Leaf opening angle	100° to 125°
Opening leaf time	4 to 10 s (adjustable)
Closing leaf time	4 to 10 s (adjustable)
Partial opening adjustment	Standard (adjustable)
Pause time	0 to 30s
Night pause time	0 to 90s
Encoder	As standard
Protection Sensor monitoring	As standard (may be excluded)
Low energy movement	As standard (may be excluded)
Operating ambient temperature	-20°C to +55°C
Protection class	IP 23 (for internal use only)
Compliance with regulations	EN16005; EN61000-6-2; EN61000-6-3 ; EN13849

**ACTIVATION ARMS**



**Sliding arm**



**Articulated arm**



**Operator shaft extension**

**FUNCTION KEYPADS**

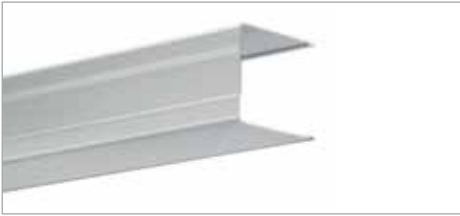


**KP EVO Function Keypad**

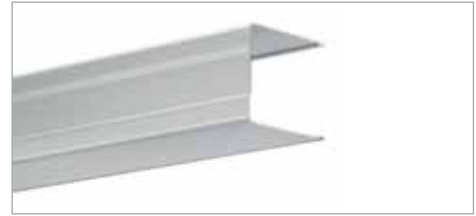


**LK EVO Function Selector**

## A950 ACCESSORIES



Cover in natural aluminium (length 3 m)



Cover in anodised aluminium (length 3 m)



Pair of side panels with aluminium cover



XBFRM1 one-directional microwave radar



MINISWITCH GLS photocell



Pair of recessed front panels for MINISWITCH GLS in black plastic



T20 E Recessed installation



T20 I Recessed installation



European cylinder lock (T20 - T21 - XK21) with customised key from 1 to 36



XMS touch button



XMS-VB wall mounting support (only for XMS)



Plastic elbow button (dim. 95 x 250 mm)



Aluminium elbow button (dim. 95 x 250 mm)



XSH multi-sensor board (to connect up to 4 XPB)

**A951 ACCESSORIES**



**XBFRM1 one-directional microwave radar**



**Pair of side panels with aluminium cover**



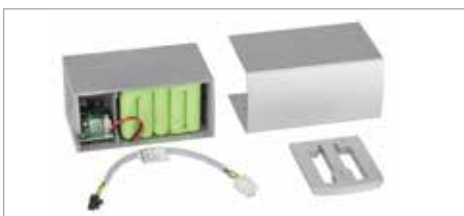
**T20 I Recessed installation**



**XMS touch button**



**Plastic elbow button (dim. 95mm x 250 mm)**



**Backup battery**



**MINISWITCH GLS photocell**



**T20 E Recessed installation**



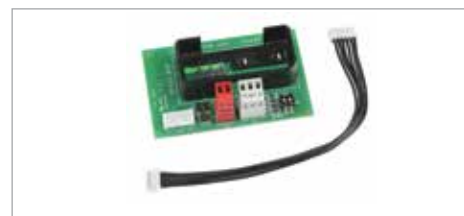
**European cylinder lock (T20 - T21 - XK21) with customised key from 1 to 36**



**XMS-VB wall mounting support(only for XMS)**



**Aluminium elbow button (dim. 95mm x 250 mm)**



**Communications board**





## OUR DIGITAL AND ONLINE BRAND PRESENCE AND SUPPORT

### WEBSITE

- Landing pages in French, Spanish, Portuguese and Thai
- Access to product documentation, comparison charts and diagnostic guides
- Device software
- G-WEB PLUS interface for administering CENTURION GSM devices
- Massive library of useful articles
- <http://www.centsys.com>

### SUPPORT

- Dedicated technicians, unrivalled backup support and friendly and efficient sales personnel
- Technical support in all official languages, as well as French, Spanish and Portuguese
- Call centre operates 7am to 6pm (GMT +2), Monday to Friday and 8am to 4:30pm (GMT +2) on Saturdays

### SOCIAL MEDIA

- “Like” our Facebook page ([www.facebook.com/centurionsystems](http://www.facebook.com/centurionsystems)) and follow us on Twitter (@askCenturion) for all the exciting company news, launches, roadshows, competitions as well as technical and sales support
- Subscribe to our YouTube channel for access to an extensive library of how-to videos and tutorials
- Interesting and innovative installations from around the world, including unusual uses of CENTURION products
- Are you on our YouTube channel? Showcase your installations!

### NEWSLETTER

- Fantastic way of staying abreast of company news, developments, events and functions, new products and enhancements to existing range



## INDUSTRY-LEADING PRODUCT TECHNOLOGIES

### TECHNOLOGY

CENTURION products feature a host of industry-leading technologies, all conducive to greater security, greater convenience and superior functionality. Just some of the advanced technologies found in our products are:

- **ChronoGuard** – a world-first timer technology that allows the user to set a myriad Auto-activation and Time-barring functions using the onboard Real Time Clock and Calendar, which tracks the date up to the year 2099
- **Intruder-detection Alarms** – The novel feature-set – consisting of the Beam Alarm and Ambush Alarm - ups the security ante even further by providing an audible output when the infrared gate safety beams are obstructed, or remain interrupted for a pre-defined period of time
- **Code-hopping technology** – CENTURION remote controls are equipped with code-hopping encoders which process the outgoing transmission through a sophisticated encryption engine, making copying and cloning virtually impossible. No two transmitted codes will ever be alike

- **Onboard diagnostics** – Our D-Series range provides both audible and visual feedback of the gate status at any given time. In addition, a designated diagnostic screen makes fault-finding a breeze
- **High-volume capability** – CENTURION operators are designed to work hard, and work hard they do – with some operators such as the SECTOR II traffic barrier being capable of performing in excess of 3000 operations every single day



**Connect with us on**

 [facebook.com/CenturionSystems](https://facebook.com/CenturionSystems)

 [YouTube.com/CenturionSystems](https://YouTube.com/CenturionSystems)

 [Twitter@askCenturion](https://Twitter@askCenturion)

 [Instagram@centurion.systems](https://Instagram@centurion.systems)

Newsletter subscription: [www.centsys.com/Subscribe](http://www.centsys.com/Subscribe)

**[www.centsys.com](http://www.centsys.com)**

**Sharecall 0860 CENTURION (0860 236 887)  
+27 11 699 2400**

**Sharecall Technical Support 0861 003 123  
+27 11 699 2481  
from 07h00 to 18h00 (GMT+2)**

**Sharecall numbers applicable when dialled  
from within South Africa only**

The products depicted are for illustrative purposes only. Actual products may differ.

**E&OE. Centurion Systems (Pty) Ltd. reserves the right to change any product without prior notice.**

All product and brand names in this document that are accompanied by the ® symbol are registered trademarks in South Africa and/or other countries, in favour of Centurion Systems (Pty) Ltd, South Africa. The Centurion Systems logo, all product and brand names in this document that are accompanied by the TM symbol are trademarks of Centurion Systems (Pty) Ltd, in South Africa and other territories; all rights are reserved.

We invite you to contact us for further details.